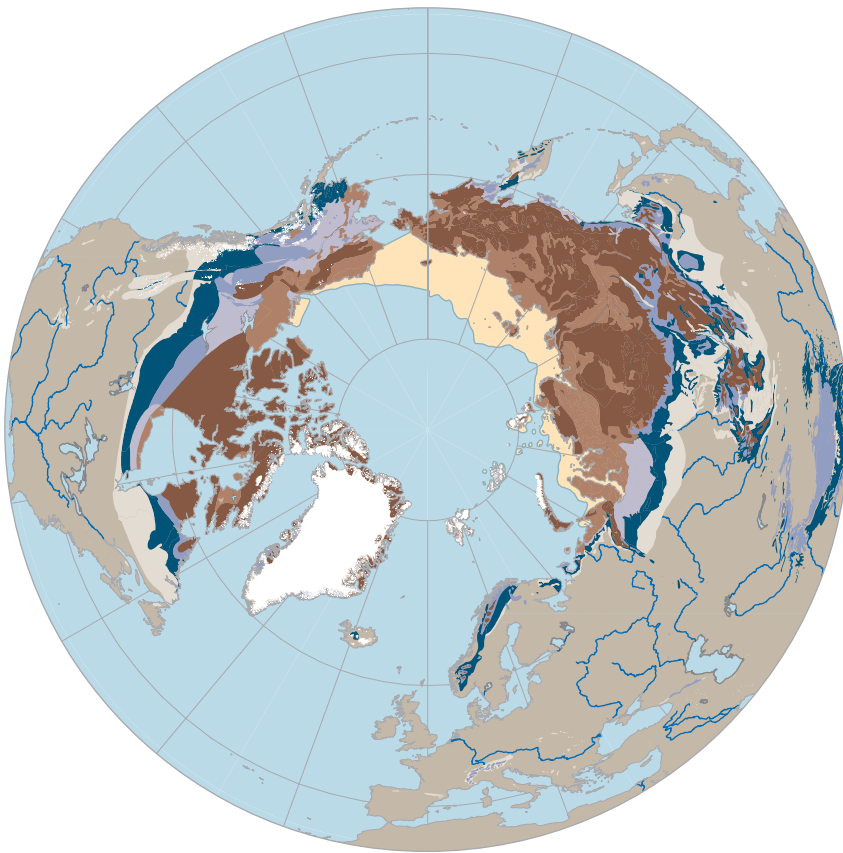


Arctic Monitoring and Assessment Programme

Arctic Climate Issues 2011



Extent of permafrost, % of area

- Continuous (90-100%)
 - Thick overburden cover (>5-10 m)
 - Thin overburden cover (<5-10m) and exposed bedrock
- Discontinuous (50-90%)
 - Thick overburden cover (>5-10 m)
 - Thin overburden cover (<5-10m) and exposed bedrock
- Sporadic (10-50%)
 - Sporadic (10-50%)
- Isolated patches (0-10%)
 - Isolated patches (0-10%)
- Subsea permafrost
 - Subsea permafrost
- Arctic glaciers and ice sheets
 - Arctic glaciers and ice sheets